



Garage Cabinets of Idaho



We Create Space

(208) 867-2764 IDAHO

(406) 356-6668 Montana

Designing your Garage Storage

When designing your garage storage you first have to figure out how best to store your things. Here are a few things to take into consideration.

1. What are you storing?
2. Do you need a work bench?
3. Do you want just storage or a showroom for your vehicles?
4. Graph paper is an easy way to layout your garage. Do a drawing of each wall. An elevation (looking at the wall) and a plan view of the garage (looking down on the floor).
5. Things to pay attention to:
 1. Ceiling height.
 2. Is there a curb (Stem Wall)? The concrete ledge that the walls sit on. What is the height at the tallest point (normally at the garage door)?
 3. The height of the garage door rail from the top of the curb.
 4. Distance from the curve of the garage door rail to the garage door wall.
 5. Window(s) location and height from the floor.
 6. Door locations and distances from the corners.
 7. The electrical panel (**DON'T EVEN THINK ABOUT COVERING IT UP**). We do cover sprinkler controls and built in vacuums as well as gun safes.
 8. If you plan on doing the floor, it should be done before cabinet insulation (allow a week for curing).



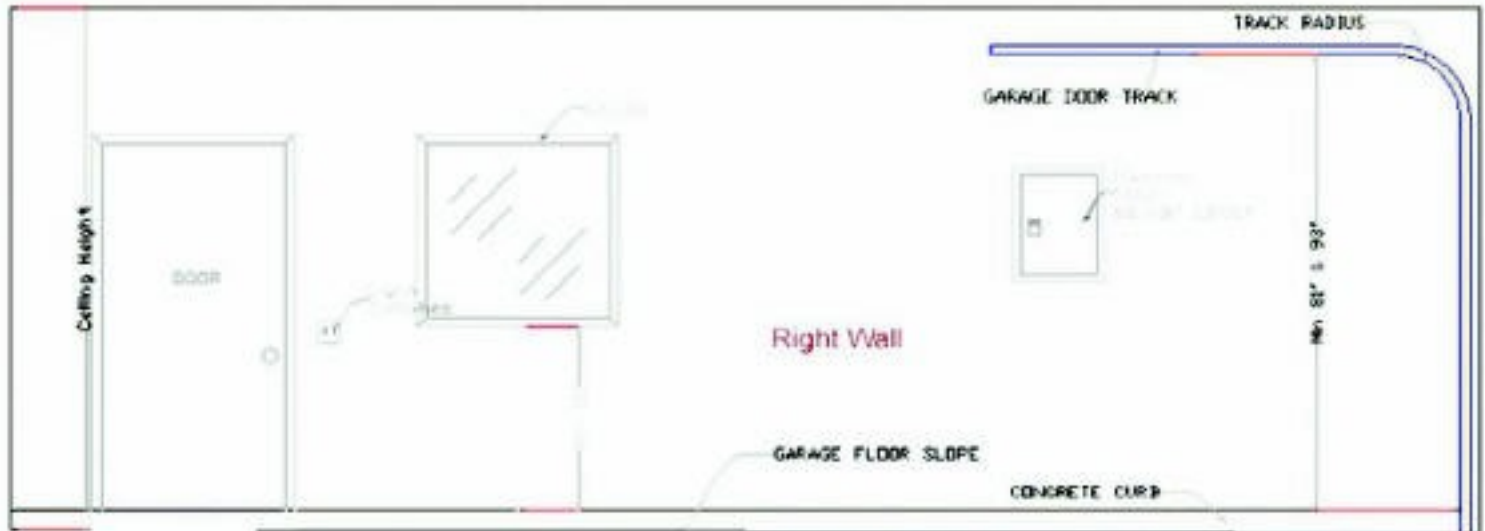
Garage Cabinets of Idaho®



We Create Space

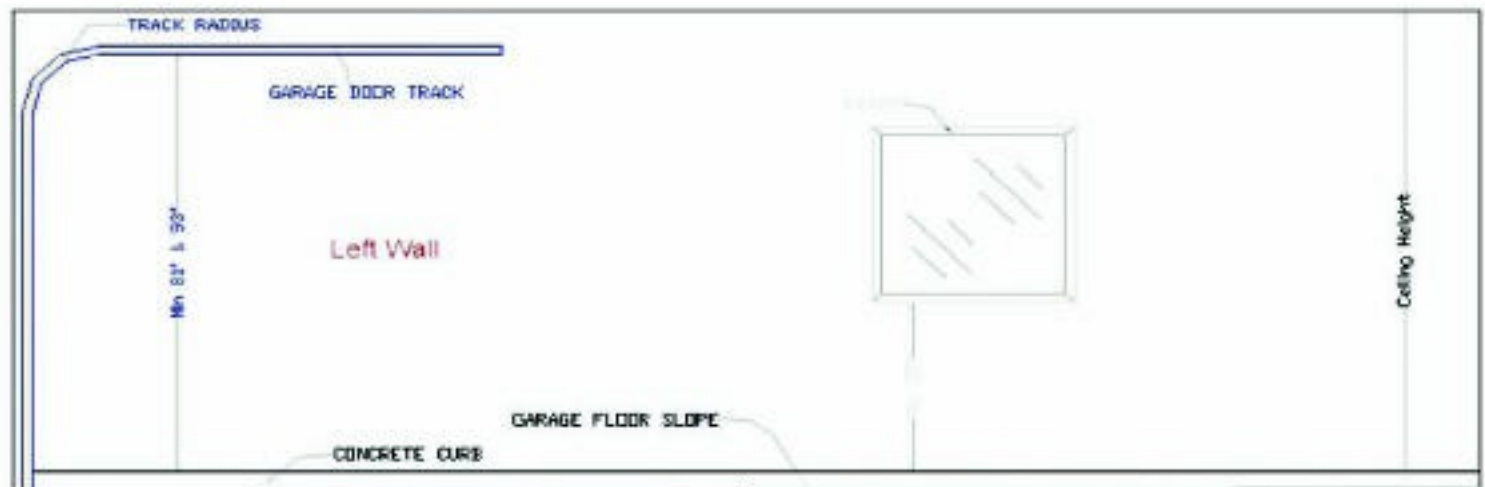
(208) 867-2764 IDAHO

(406) 356-6668 Montana



Drawing 4

1. Height of the concrete curb at highest point. Some have them some don't.
2. Height of Door track from top of curb. 7' Cabinets require 81" and 8' 93". Pay attention to the Radius portion of the track.
3. Windows: The counter height of normal base cabinets are 36" above the floor. Allow 32" above curb (min.).
4. Measure from the side of the casing. If no casing try and allow 2" on either side.
5. Electrical panels should never be covered. Outlet on the wall as well as Sprinkler Controls can be covered. Garage door controls can be relocated to the sides of the cabinets.
6. If you want a peninsula between garage doors see drawing 5.



Drawing 5

1. Height of the concrete curb at highest point. Some have them some don't.
2. Height of Door track from top of curb. 7' Cabinets require 81" and 8' 93". Pay attention to the Radius portion of the track.
3. Windows: The counter height of normal base cabinets are 36" above the floor. Allow 32" above curb (min.).
4. Measure from the side of the casing. If no casing try and allow 2" on either side.
5. Electrical panels should never be covered. Outlet on the wall as well as Sprinkler Controls can be covered. Garage door controls can be relocated to the sides of the cabinets.
6. If you want a peninsula between garage doors see drawing 5.



Garage Cabinets of Idaho®



We Create Space

(208) 867-2764 IDAHO

(406) 356-6668 Montana

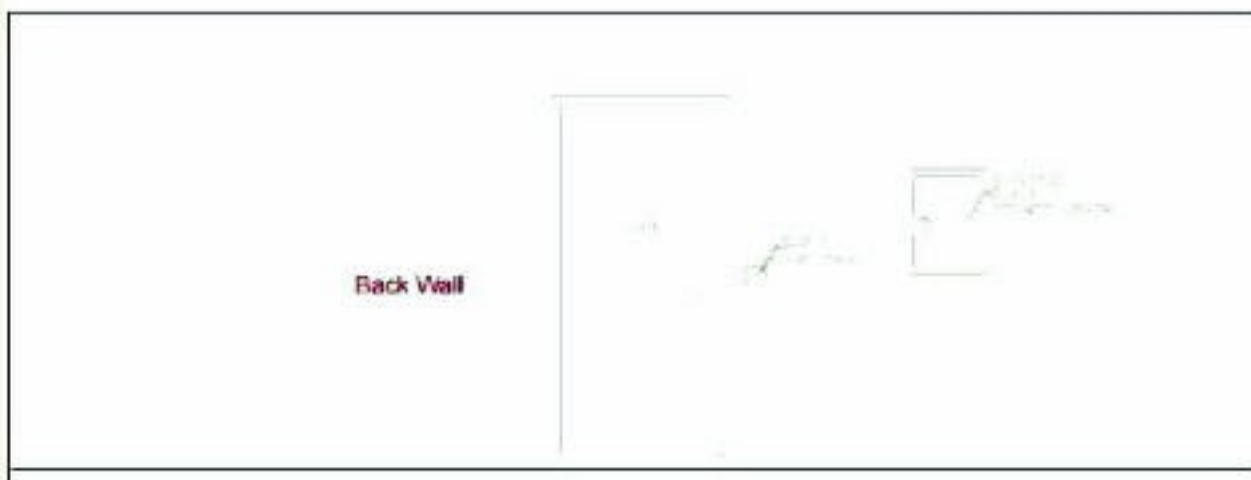


Figure 2

1. The back wall usually has a door and light switches.
2. You can put cabinets to the door and switches. If you want to relocate the switches they can be mounted in the side of the cabinets.

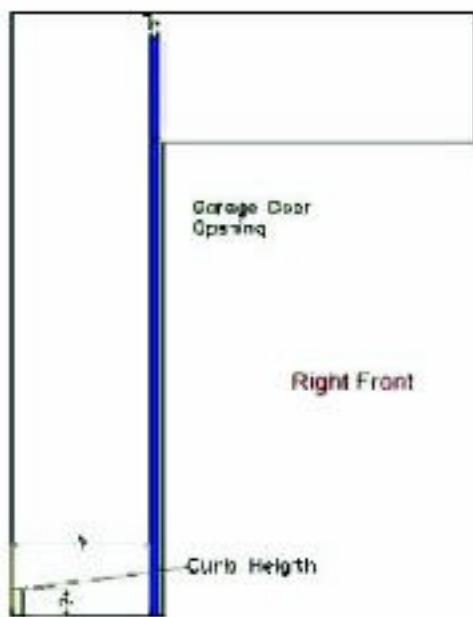


Figure 3

1. Min. Distance 24" if less you can make the first 2 cabinets 18" Deep.
2. T296 & T496 require 48" and T386 require 36"



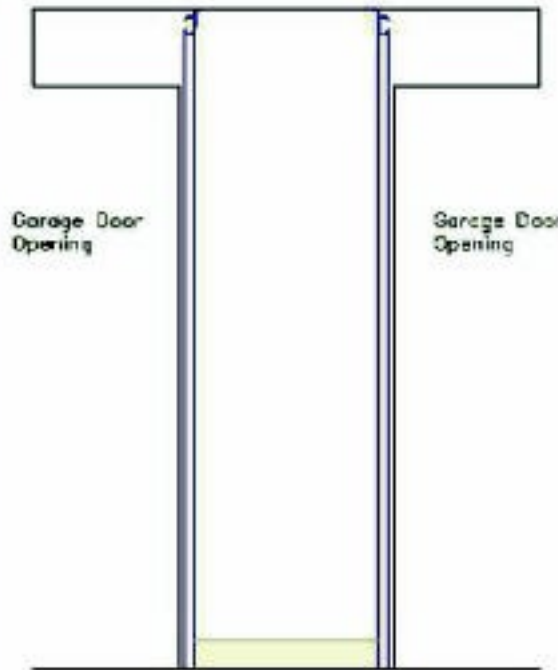
Garage Cabinets of Idaho®



We Create Space

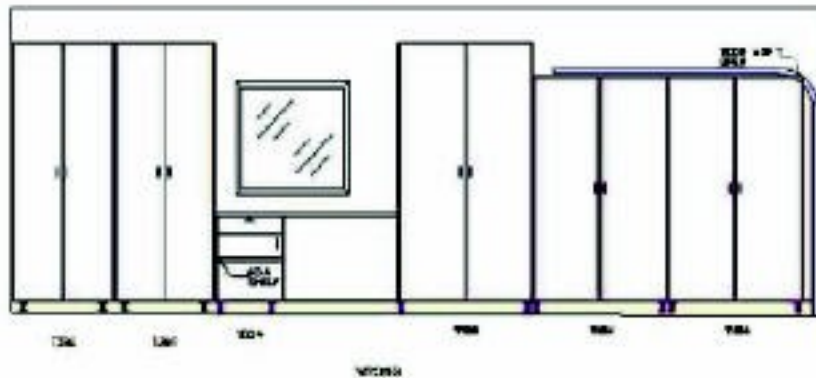
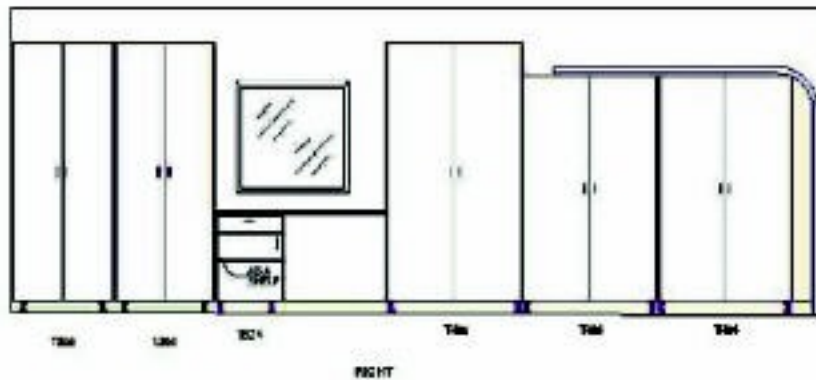
(208) 867-2764 IDAHO

(406) 356-6668 MONTANA



Drawing B

1. Min. Distance between rails 25"
2. Order optional backs.



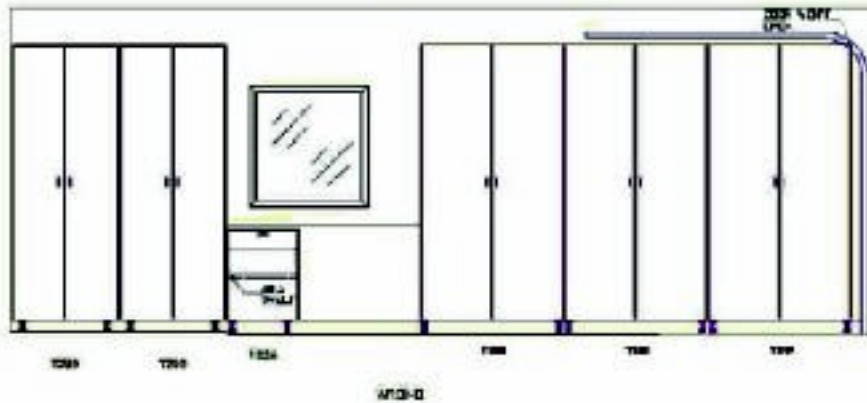
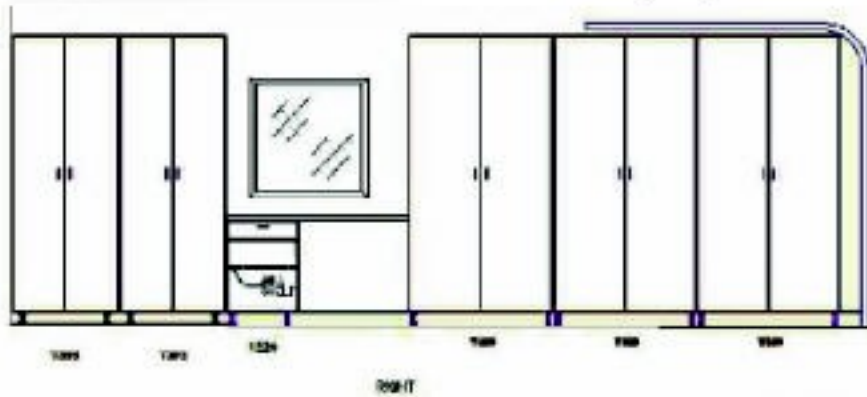


We Create Space

(208) 867-2764 IDAHO

(406) 356-6668 Montana

Garage Cabinets of Idaho®



Fill in the measurement in inches. At the bottom of this form is an area you can put in what you would like.

Front (Door) Wall

Standing looking into the Garage.

Ceiling Height Left Wall Length to Door Rail Right Wall Length to Door Rail

Curb (Stem Wall Height-Highest Point)

Distance from stem wall to bottom of garage door rail

80" = 7' Tall cabinet

92" = 8' Tall Cabinet

Right Wall:

Door rails (from wall to track):

Electrical Panel:

Width: Height: Distance from floor: Distance from:



Garage Cabinets of Idaho®



We Create Space

(208) 867-2764 IDAHO

(406) 356-6668 Montana

- Right Corner:
- Left Corner:
- Front (Door):
- Back Wall:

Passage Door measure from the edge of the casing:

Width: Height from floor:

Distance from:

- Right Corner:
- Left Corner:
- Front (Door):
- Back Wall:

Window (s) measure from the edge of the casing:

Window: Width: Height from floor:

Distance from:

- Right Corner:
- Left Corner:
- Front (Door):
- Back Wall:

Describe what you would like, if you want a color or woodgrain let us know.



Garage Cabinets of Idaho®



We Create Space

(208) 867-2764 IDAHO

(406) 356-6668 Montana

Left Wall:

Door rails (from wall to track):

Electrical Panel:

Width: Height: Distance from floor: Distance from:

- Right Corner:
- Left Corner:
- Front (Door):
- Back Wall:

Passage Door measure from the edge of the casing:

Width: Height from floor:

Distance from:

- Right Corner:
- Left Corner:
- Front (Door):
- Back Wall: ;

Window (s) measure from the edge of the casing:

Window: Width: Height from floor: Distance from:

- Right Corner:
- Left Corner:
- Front (Door):
- Back Wall:

Describe what you would like, if you want a color or woodgrain let us know.



Garage Cabinets of Idaho®



We Create Space

(208) 867-2764 IDAHO

(406) 356-6668 Montana

Back Wall:

Door rails (from wall to track):

Electrical Panel:

Width: Height: Distance from floor: Distance from:

- Right Corner:
- Left Corner:
- Front (Door):
- Back Wall:

Passage Door measure from the edge of the casing:

Width: Height from floor:

Distance from:

- Right Corner:
- Left Corner:
- Front (Door):
- Back Wall:

Window (s) measure from the edge of the casing:

Window: Width: Height from floor: Distance from:

- Right Corner:
- Left Corner:
- Front (Door):
- Back Wall: